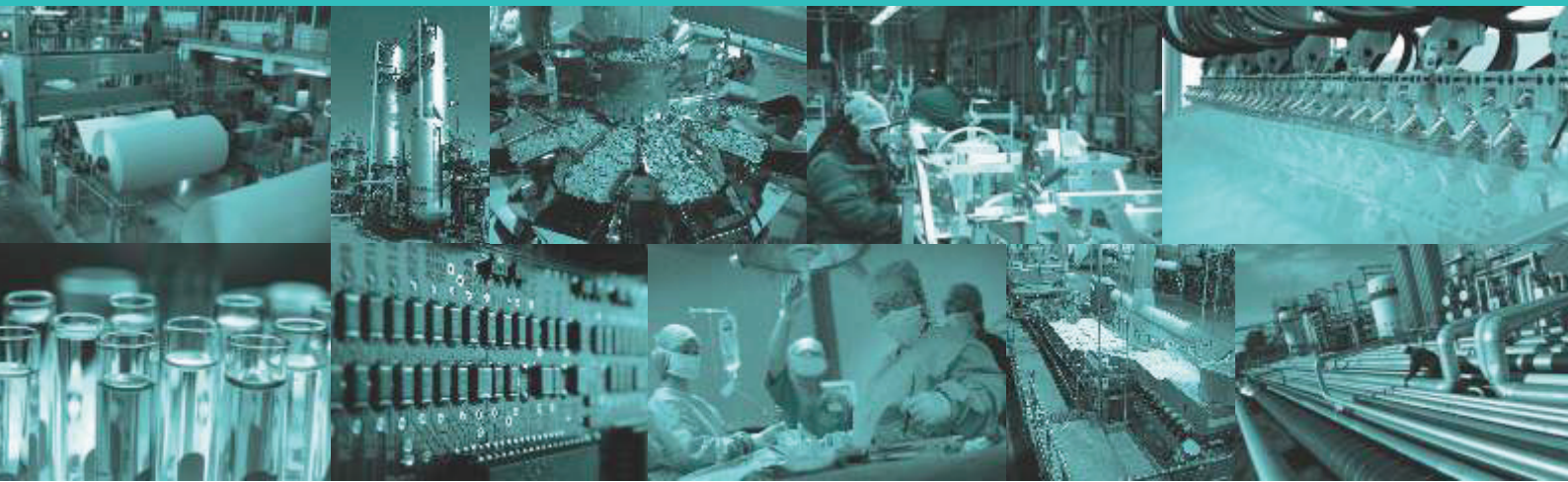




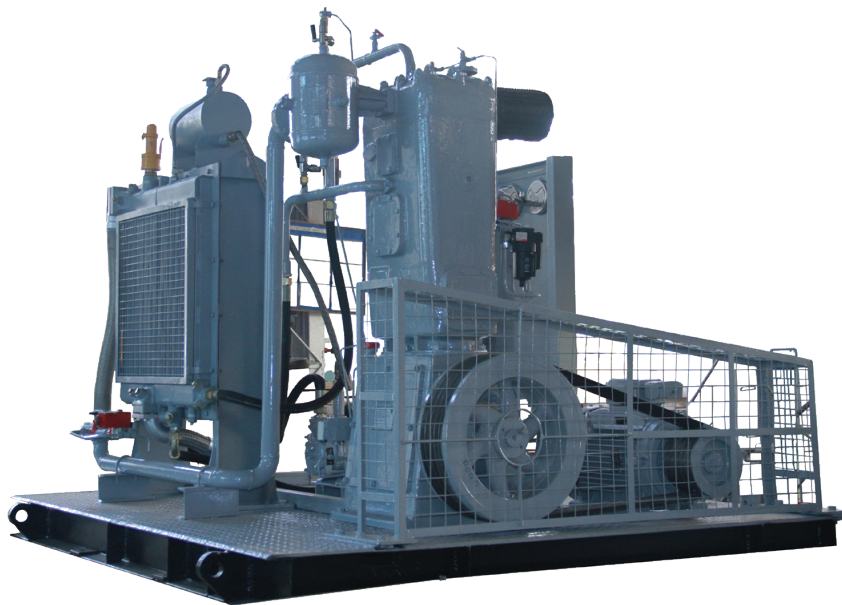
**KIRLOSKAR PNEUMATIC CO. LTD.**

Enriching Lives

**VERTICAL RECIPROCATING  
AIR COMPRESSION SYSTEMS**



**ENERGY EFFICIENT  
100% OIL FREE  
CLEAN AIR**



*Proven Design  
for  
Continuous Operation*

*Exceeding Your Expectations!*

## TECHNICAL SPECIFICATIONS

Model	FAD Range m <sup>3</sup> /min		Pressure Range kg/cm <sup>2</sup> g		Motor Rating kW	
	Min	Max	Min	Max	Min	Max
TC - 50	1.20	1.74	1	9	9.30	15.00
TC - 100	2.45	3.55	1	9	15.00	22.00
TC - 200	5.00	6.55	1	9	22.00	37.00



## COMPONENTS

- ✓ Efficient valves with large flow area
- ✓ High strength piston rings for longer life
- ✓ Reliable scrapper rings ensure continuous Oil Free Air



## SERVICES

- ✓ Comprehensive field assistance
- ✓ Extensive Engineered solutions
- ✓ Services & Spares delivered at lowest lead time



## SUPPORT

- ✓ In-House Customer Training Facility
- ✓ Over The Air monitoring and diagnostics
- ✓ Dedicated Customer Care Center for quick response.

## Note:

- ✓ All packaged versions include compressor, motor, aftercooler, control panel suitably mounted on deck. Air Dryer and Receiver are optional supplies.
- ✓ Self contained packaged versions include, in addition to above, a close circuit water cooling system thus eliminating the need for an external water supply.
- ✓ The above performances are given at sea levels and 30°C suction condition.
- ✓ Also available in silenced versions.
- ✓ FAD and Power tolerance as per IS-5456 latest edition.

Kirloskar Vertical Reciprocating Compression systems are Engineered and Manufactured in an IMS Certified facility. These packages have proved their robustness by working round the clock at various installations across the globe for the last 50 years.

Our latest offering boasts of more Robust Construction, Compact Design and Highly Efficient suction/delivery valves than its predecessor.

## Accessories

**Air Receiver:** Capable of handling high pressure air; tested leak proof design conforming to IS 2825. Available in both carbon steel and stainless steel versions.

## Non Return Valve

Highly efficient Plate Type NRV to avoid back pressure of air which is installed between the aftercooler and air receiver.

## Aftercooler With Moisture Separator

Shell and Tube, Fixed tube bundle type horizontal aftercooler is provided with the machine that provides compressed air near to atmospheric temperature at delivery. Custom engineered coolers available as per client requirement.

## Modular Design

The machines can be engineered as Gas Compressor, for gas applications or Vacuum Pumps. For further details of such customized solutions, please contact our Sales Representative.



Enriching Lives



An IMS Certified Company

## KIRLOSKAR PNEUMATIC CO. LTD.

A Kirloskar Group Company

REGD. OFFICE & WORKS : PUNE : Hadapsar Industrial Estate, PUNE 411 013.

Ph : 020 - 26870133 / 26727000 Fax : 020 - 26870297 / 26870634. Email : acdmktg@kpcl.net

BRANCH	TELEPHONE	FAX	E-MAIL
MUMBAI : 1002, 10th Floor, Vikas Centre, Dr. C.G. Road, Opp. Bombay Presidency Golf Club, Chembur (East), Mumbai 400 074	022 - 61511234	022 - 25181313	kpclmumacd@kpcl.net
DELHI : 607, Manjusha Building, 57 Nehru Place, New Delhi 110 019	011 - 26289962, 26421346	011 - 26429685	kpcldelacd@kpcl.net
BANGALURU : NO 102, 1st Floor, Andree Capitol, 8/1 KH Road, Bangaluru 560 027	080 - 22270029, 22270079	080 - 22270045	ccsblr@kpcl.net
CHENNAI : 1st Floor, Elcanso Complex No. 10, Cosa Major Road, Egmore, Chennai 600 008	044 - 28193066, 28190436, 28192092, 30910143/0144	044 - 28194937	kpclchnacd@kpcl.net
HYDERABAD : 3-5-907, 403-404, Mahavir Lok, Himayatnagar Hyderabad 500 029	040 - 23260743, 23260746	040 - 23260171	hyd2_kpclhyd@sancharnet.in
KOLKATA : 15 GaneshChandra Avenue, 9th Floor, Kolkatta 700 013	033-22119080, 22119081, 22111905	033 - 22365586, 22116948	kpclcal@cal2.vsnl.net.in
VADODARA : Chi Chi Tower, A, Killol Children Hospital Lane, Tana Apartment, Ellora Park, Subhanpura, Vadodara 390007	0265 - 2284604, 2284605, 2284606, 3096787	0265 - 2280095	kpclbrd@gmail.com

[www.kirloskarkpcl.com](http://www.kirloskarkpcl.com)

CIN: L29120PN1974PLC110307